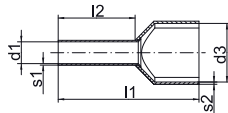


ST 15 B Pocket box with insulated twin cable end-sleeves 2 x 0.75 - 2 x 2.5 mm²



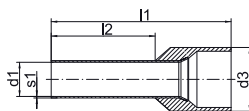
▶ Pocket box made from impact-resistant plastic

Characteristics

- Stackable and resealable

Item	Part No.			
Pocket box with twin cable end-sleeves 2 x 0.75 - 2 x 2.5 mm ²	ST15B			
Scope of supply	Colour	Description	l2 mm	Quantity
ST15L		Pocket box		1
8708		Insl. twin cable end-sleeve, 2 x 0.75 mm ²	8	50
8718		Insl. twin cable end-sleeve, 2 x 1 mm ²	8	50
8728		Insl. twin cable end-sleeve, 2 x 1.5 mm ²	8	50
87310		Insl. twin cable end-sleeve, 2 x 2.5 mm ²	10	50

ST 1 B pocket box with insl. cable end-sleeves 0.5 - 2.5 mm², DIN 46228 Part 4



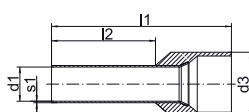
▶ Pocket box made from impact-resistant plastic

Characteristics

- Stackable and resealable

Item	Part No.			
Pocket box with insl. cable end-sleeves 0.5 - 2.5 mm ² , DIN 46228 Part 4, colour code 1	ST1B			
Scope of supply	Colour	Description	l2 mm	Quantity
ST1L		Pocket box		1
1690		Insl. cable end-sleeve, 0.5 mm ² , 14 mm	8	50
170W		Insl. cable end-sleeve, 0.75 mm ² , 14.6 mm	8	100
171G		Insl. cable end-sleeve, 1 mm ² , 14.6 mm	8	100
172R0		Insl. cable end-sleeve, 1.5 mm ² , 14.6 mm	8	100
173B		Insl. cable end-sleeve, 2.5 mm ² , 15.2 mm	8	50

ST 11 B pocket box with insl. cable end-sleeves 0.5 - 2.5 mm², DIN 46228 Part 4



▶ Pocket box made from impact-resistant plastic

Characteristics

- Stackable and resealable

Item	Part No.			
Pocket box with insl. cable end-sleeves 0.5 - 2.5 mm ² , DIN 46228 Part 4	ST11B			
Scope of supply	Colour	Description	l2 mm	Quantity
ST11L		Pocket box		1
4698		Insl. Cable end-sleeve, 0.5 mm ² , 14 mm	8	50
4708		Insl. cable end-sleeve, 0.75 mm ² , 14 mm	8	100
4718		Insl. cable end-sleeve, 1 mm ² , 14 mm	8	100
4728		Insl. cable end-sleeve, 1.5 mm ² , 14 mm	8	100
4738		Insl. cable end-sleeve, 2.5 mm ² , 14 mm	8	50